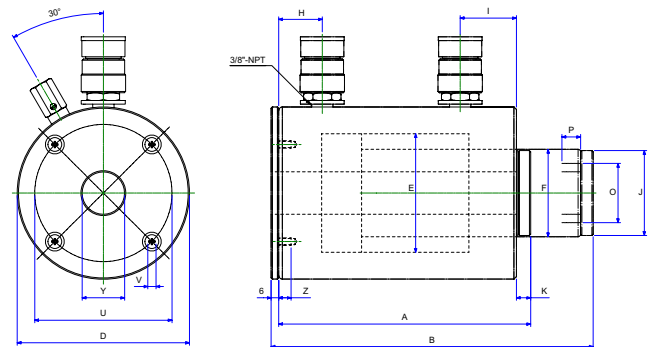


ALUMINIUM CYLINDERS

BETEX ADHC series, light weight hollow aluminium cylinder, double acting



Model ADHC cylinders 30-60T



Capacity : 30 - 60 ton
Stroke : 50 - 250 mm
Max. working pressure : 700 bar

Model: ADHC series

- Half the weight of steel cylinders
- Steel piston for protection against load damage
- Chrome plated centre hole for extra protection
- Carrying handles standard on all models
- Black hard-anodized coating reduces wear & corrosion
- Stop rings for piston blow-out protection
- Rod wiper protects inner cylinder from dirt

Base Plate Mounting holes dimensions (mm)

| Cylinder model/ capacity ton | Bolt circle U mm | Thread V mm | Thread Dept Z mm |
|---------------------------------|---------------------|----------------|---------------------|
| ADHC-30 | 110 | M6 x 1.0 | 10 |
| ADHC-60 | 160 | M6 x 1.0 | 10 |

ADHC series

| Type | Cap ton | Stroke mm | Cap ton Push | Cap ton Pull | Oil cap cm ³ Push | Oil cap cm ³ Pull | A Height mm Retr. | B Ext. mm | D Ø mm | E Ø mm | F Ø mm | H mm | I mm | J Ø mm | K mm | P mm | O Ø un | Y Ø mm | Weight Kg |
|----------|---------|-----------|--------------|--------------|------------------------------|------------------------------|-------------------|-----------|--------|--------|--------|------|------|--------|------|------|-----------------------------------|--------|-----------|
| ADHC302 | 30 | 50 | 38.5 | 22.7 | 275 | 162 | 202 | 252 | 138 | 95 | 70 | 35 | 45 | 68 | 11.5 | 25 | 1 ⁷ / ₈ -16 | 34 | 9.3 |
| ADHC306 | 30 | 150 | 38.5 | 22.7 | 825 | 486 | 327 | 477 | 138 | 95 | 70 | 35 | 45 | 68 | 11.5 | 25 | - | 34 | 13 |
| ADHC3010 | 30 | 250 | 38.5 | 22.7 | 1374 | 810 | 430 | 680 | 138 | 95 | 70 | 35 | 45 | 68 | 11.5 | 25 | - | 34 | 16 |
| ADHC602 | 60 | 50 | 62.6 | 31 | 447.5 | 221 | 250 | 300 | 200 | 125 | 100 | 50 | 50 | 89 | 14 | 25 | 2 ³ / ₄ -16 | 54 | 15.5 |
| ADHC606 | 60 | 150 | 62.6 | 31 | 1342 | 662 | 350 | 500 | 200 | 125 | 100 | 50 | 50 | 89 | 14 | 25 | - | 54 | 23 |
| ADHC6010 | 60 | 250 | 62.6 | 31 | 2237 | 1104 | 433 | 683 | 200 | 125 | 100 | 50 | 50 | 89 | 14 | 25 | - | 54 | 30.5 |

TIP! Use in combination with: hand- and foot pumps, page 55-67. Accessories, page 70-73