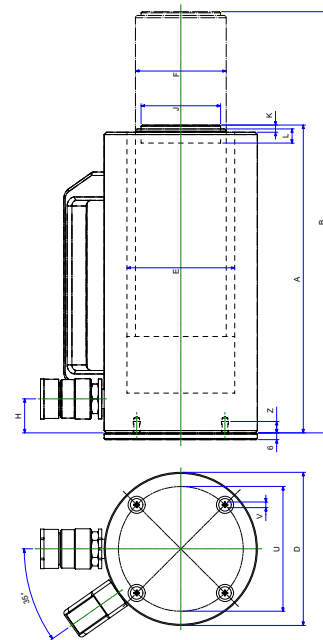


## ALUMINIUM CYLINDERS

BETEX SSA series, light weight aluminium cylinder, spring return, single acting



Capacity : 50 - 100 ton  
 Stroke : 50 - 250 mm  
 Max. working pressure : 700 bar

### Model: SSA series

- 8 standard models available for 50 to 100 tons.
- Up to 60% lighter than steel cylinders.
- Heavy-duty spring for easy and full retraction.
- Large saddle surface for angle load protection.
- High-flow quality couplers.
- All models are provided with carrying handles.
- Rod wiper protects inner rod from dirt.
- Black hard-anodized housing and piston reduce wear and corrosion.

Custom stroke lengths and capacities are available.

### Base Plate Mounting holes dimensions (mm)

Cylinder model/ capacity ton	Bolt circle U mm	Thread V mm	Thread Dept Z mm
SSA-20	70	M6 x 1.0	10
SSA-30	80	M6 x 1.0	10
SSA-50	110	M6 x 1.0	10
SSA-100	160	M6 x 1.0	10

### SSA series

Type	Capacity ton	Stroke mm	Oil cap cm <sup>3</sup>	A Height mm Retracted	B Height mm Extended	D ø mm	E ø mm	F ø mm	H ø mm	J ø mm	K mm	L mm	Weight Kg
SSA202	20	50	166	168	218	92	65	55	25	40	3	9	4,3
SSA204		100	332	218	318	92	65	55	25	40	3	9	5
SSA206		150	498	268	418	92	65	55	25	40	3	9	5,7
SSA208		200	664	318	518	92	65	55	25	40	3	9	6,5
SSA302	30	50	221	175	225	110	75	60	25	40	3	9	6
SSA304		100	442	225	325	110	75	60	25	40	3	9	6,9
SSA306		150	663	275	425	110	75	60	25	40	3	9	7,9
SSA308		200	884	325	525	110	75	60	25	40	3	9	8,8
SSA502	50	50	354,5	171	221	135	95	80	30	70	6	12	7,7
SSA504		100	709	221	321	135	95	80	30	70	6	12	9,1
SSA506		150	1063,5	271	421	135	95	80	30	70	6	12	11,7
SSA508		200	1418	321	521	135	95	80	30	70	6	12	13,5
SSA5010		250	1772,5	371	621	135	95	80	30	70	6	12	16,4
SSA1002	100	50	715	185	235	200	135	105	45	70	6	12	17,2
SSA1004		100	1430	235	335	200	135	105	45	70	6	12	21
SSA1006		150	2145	285	435	200	135	105	45	70	6	12	25,1
SSA1008		200	2860	335	535	200	135	105	45	70	6	12	28,5
SSA10010		250	3575	388	638	200	135	105	45	70	6	12	30,7

**TIP!** Use in combination with: hand- and foot pumps, page 55-67. Accessories, page 70-73