



QX Series™



SERIES
PRECISION FASTENING SYSTEMS



REAL TOOLS FOR REAL WORK.™

Take Total Control

Taking total control of your fastening process doesn't have to be complicated. Our comprehensive QX Series™ family of fastening systems deliver simple, flexible and capable solutions for all of your assembly requirements. No matter the industry or application, you can count on Ingersoll Rand as a trusted partner to help you get the job done right.



Simple

- Save on selection, training and installation costs
- Multi-function display module for quick setup and feedback
- Compact, lightweight and ergonomically balanced so the operator can work without restraints
- The intuitive INSIGHT Connect app will help you stay productive and mobile on the plant floor



Flexible

- Custom solutions available
- Provides up to eight fully programmable configurations on a single tool, reducing costs and workspace clutter
- Fast and intuitive programming makes the tool easily adaptable to any needed changes on your assembly line
- Cordless and portable, allowing for effortless movement around your facility



Capable

- At the heart of every tool is the closed-loop transducer control that delivers precise torque and accurate, traceable results
- Durable designs, lower cost of ownership
- Available in a variety of configurations, including pistol grip, angle wrench, multiplier and ETS*
- Wireless communication option enables flexible line integration, remote monitoring and simple system programming across a plant-wide network
- Manage cycle data, control the process, receive system status alerts and implement configuration adjustments in real time using Ethernet, Fieldbus and digital I/O

Icon identifiers

Compatibility Reference



QX Series™ Features



- Patented transducer control provides traceable results
- USB port for convenient programming and data transfer
- Precision planetary gears for greater reliability
- Stores cycle data for up to 1,200 rundowns
- Multiple drive choices 1/4" quick-change, 1/4" square drive, 3/8" square drive, and 1/2" square drive options available
- Super bright LED headlight with programmable on and off times. (Not available on the QX Series™ angle wrench)
- Durable DC brushless motor tested beyond a million cycles
- Optional wireless communications for process control and data collection
- High strength, impact resistant lens guards against damage
- Non-contacting patented trigger and reverse switch for maximum durability
- Ergonomic design, comfortable, lightweight and balanced
- Digital signal processor monitors torque, angle and motor current while communicating end-of-run data
- Optional backlit display offers quick setup and remarkable visual feedback
- Lithium ion battery provides maximum run time and portability



* Ergonomic Tightening System

How to Select the Right Tool

When it comes to fastening, non-transducerized tools don't stand a chance. The QX Series™ line of products give you closed-loop control of your fastening process. Each and every tool allows for programmable tightening strategies to deliver higher quality fastened joints and a level of control that is unmatched by other solutions. The diversity of the QX Series™ lineup offers a simple, flexible and capable solution for any fastening need.

FEATURES

	QXN	QXC	QXX
Total control of torque, speed and degrees of rotation	✓	✓	✓
One tightening configuration that is programmed via USB using the INSIGHT Connect app	✓		
Eight tightening configurations available, giving it the ability to consolidate the number of tools		✓	✓
Programming capability via USB using ICS software	✓	✓	✓
Optional ETS (Ergonomic Tightening System) to reduce torque reaction experienced by operator	✓	✓	✓
Ability to program a multi-step tightening configuration	✓	✓	✓
Multi-color visual status indicators for operator feedback	✓	✓	✓
INSIGHT Connect app	✓	✓	✓
Display shows actual achieved torque or angle value		✓	✓
Programming capability using onboard keypad and display		✓	✓
QXM Torque Multiplier (optional) models		✓	✓
Ability to integrate with line control systems for error proofing and data collection			✓
Compatible with standard accessories like light stack, socket tray, bar code scanner, etc			✓
Allows remote access and programming via plant Ethernet network using ICS software			✓

QXN Cordless Tools

QXN offers superior transducerized control and operator feedback in a way that is easy to use and simple to setup. This unique series features one tightening configuration that can be programmed via USB using the INSIGHT Connect app.



Features

- Transducerized for precise torque measurement
- Closed-loop control of torque, speed and degrees of rotation
- Programmable preventative maintenance alarms
- Maintenance indicator for troubleshooting and diagnostics
- One tightening configuration
- Simple to program via USB using the INSIGHT Connect app
- 1200 cycles of data storage – accessible via the INSIGHT Connect app Transducerized for precise torque measurement
- Visual operator feedback using green, yellow and red lights



See page 9 for more information
Download the Insight Connect APP for free

QXC Cordless Tools

The versatile QXC features eight tightening configurations, giving it the ability to consolidate the number of tools needed in your bag or at your bench. This series also enhances the feedback provided from the tool by displaying the measured torque or angle result to the operator.



Features

- Transducerized for precise torque measurement
- Closed-loop control of torque, speed and degrees of rotation
- Programmable preventative maintenance alarms
- Maintenance indicator for troubleshooting and diagnostics
- Flexibility to utilize the same tool on multiple applications
- Visual torque validation on display
- Program eight configurations into one tool
- Simple to program options using the INSIGHT Connect app or back of tool programming
- 1200 cycles of data storage – accessible via ICS software
- Visual operator feedback using green, yellow and red lights



See page 9 for more information
Download the Insight Connect APP for free

QXX Cordless Tools

The easy to use QXX has the unique ability to integrate with line control systems for error proofing and data collection. The series also allows remote monitoring and integration with standard fastening system accessories.



Features

- Transducerized for precise torque measurement
- Closed-loop control of torque, speed and degrees of rotation
- Programmable preventative maintenance alarms
- Maintenance indicator for troubleshooting and diagnostics
- Flexibility to utilize the same tool on multiple applications
- Visual torque validation on display
- Program eight configurations into one tool
- Simple to program options using ICS software and USB cable or back of tool programming
- Visual operator feedback using display screen and green and red lights
- Full integration into plant-wide Ethernet network, for increased connectivity
- Remote access and integrated data collection capability
- Use of PCM enables transmission of tightening data and line control integration via Ethernet, Fieldbus or I/O



See page 9 for more information
Download the Insight Connect APP for free

QX Series™ ETS Cordless Tools

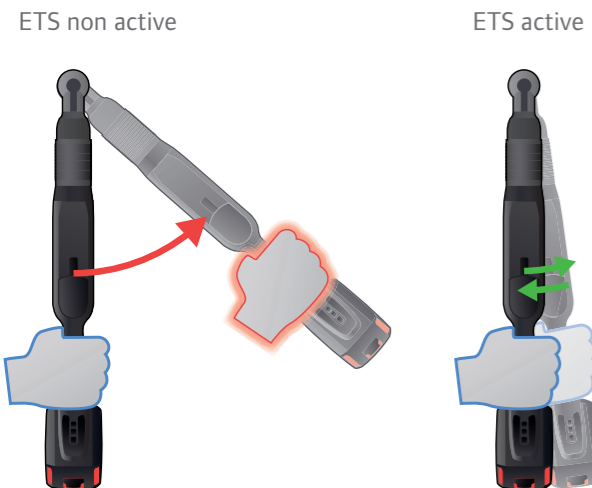


All the capability of the QX platform, without the torque reaction

Reducing the torque reaction in your fastening process doesn't have to be complicated. Control and ergonomics, not compromise – that is what the QX ETS* is all about. The QX ETS* offers all the capabilities found in the QX Series™ platform, without the torque reaction.

Features

- Ergonomically enhanced motor control algorithm significantly reduces the average force experienced by the operator during the tightening process
- Red tool highlights provide clear indication of ETS* tool identity vs standard QX tool
- Continuously blue light above keypad provides operator assurance that ETS* is ACTIVE
- QXN, QXC and QXX versions available



Simple Setup

In addition to standard direct drive mode, each tool configuration can be independently programmed to utilize one of the three available ETS* modes, simplifying setup:

Ergonomic Mode, with the lowest energy pulses, is ideal for hard joints or when arm, wrist or tool angles are most difficult.

Performance Mode, with medium energy pulses, is the best all-purpose mode.

Productivity Mode, with the highest energy pulses, is the fastest mode. Ideal for soft joints or when high production rates are required.

Standard QX Direct Drive Mode, when disable the ETS* Mode, this tools can be used as a QX standard drive mode.

INSIGHT™ Connect App



The INSIGHT™ Connect app will help you stay productive, mobile and in control of your fastening process. It programs any QXN, QXC, QXX tool without the need for additional technical training, special software or a laptop computer. Working from a smartphone or tablet, operators can use the app to quickly program the torque and angle control configurations on these closed-loop, transducerized tools.

Once installed, the INSIGHT™ Connect app can

operate offline, so it functions in large facilities or other locations where Internet signal loss may be a problem, reducing downtime and maximizing ease of use. You can quickly perform key tasks with your mobile device, including:

- Strategy
 - Torque
 - Angle
 - Torque + angle
- Back-up and restore tool settings
- Retrieval of tool logs and the ability to send via email for post-processing
- Review audit logs



QXM Cordless Torque Multiplier

The innovative QX Series™ Cordless Torque Multiplier will reduce your fastening time and cost, while ensuring repeatable accuracy for all torque-critical joints. Designed with a premium gearbox and an efficient, time-tested closed-loop transducer, the Torque Multiplier is world-class in quality, control and programmable configurations to maximize your productivity.



Features

- Maintenance indicator for troubleshooting and diagnostics
- A multi-function display module allowing for quick setup and feedback on every QX Series™ tool
- User-programmable parameters such as torque, angle and batch count reduce the number of tools needed when multiple applications are required
- Simple programming methods make the tool easily adaptable for various applications
- Pistol and angle configurations available



* Ergonomic Tightening System

Customize for Specialty Applications

QX Pistol Special Head Adapter

The QX Pistol Special Head Adapter is the perfect solution to simply increase the flexibility of your QX pistol screwdriver. Using this adapter leverages the closed-loop capability of the QX tool to the most unique applications. The adapter helps manufacturers meet the requirements of applications where restricted access requires a custom head to reach the fastener. Common applications requiring a special head adapter, include assembling aircraft wings or installing door hinges on cars and trucks.



SIMPLE
Ready made and easy to install



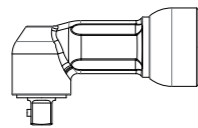
FLEXIBLE
Use your QX pistol grip tool for unique applications



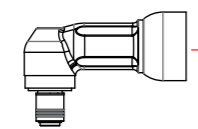
CAPABLE
Employ closed-loop control capabilities on specialty applications



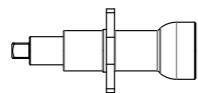
TK-VP1-550-S6
Standard 3/8" Square Drive Anglehead



TK-VP1-550-Q4
Standard 1/4" QC Drive Anglehead



TK-VP1-58
Standard 3/8" Square Drive Inline Floating Spindle with Flange Mount

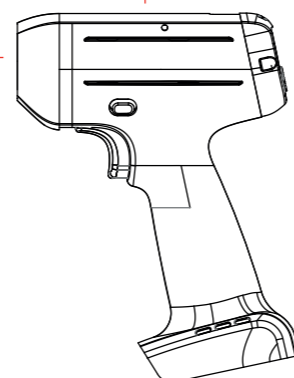


Custom Attachment
Employ closed-loop control capabilities on specialty applications.

VP1-K40
Special Head Adapter

Thrust washer
Lock spacer

Any non-multiplier pistol grip QX tool



A Plant-Wide Network for Plant-Wide Productivity

Ingersoll Rand doesn't just give you unprecedented technology, we want to give you total control of that technology. Our Process Communication Module enables flexible line integration, remote monitoring and simple system programming that translates into maximum productivity and efficiency.

QX Series™ Process Communication Module (PCM)

Power Cord	EU and UK cable	IC-PCM-2-EU
Tool Connections	Wireless tool connections (compatible with QXX)	Up to 10
Software	ICS Connect software	•
Power Supply	100-240V AC input, 5V DC output	•
Communication	Ethernet to ICS	•
Fieldbus Options	Ethernet/IP, DeviceNet, Interbus-S, Profibus, Modbus-TCP	•
Protocols	Open Protocol, Ethernet EOR, Serial EOR	•
Printers/Devices	Serial RS232, bar code, label printing	•
I/O	8 inputs/8 outputs, with behavior assignable through ICS software, operates at 24V DC	•
I/O Power Supply	100-240V AC input, 24V DC output	•
Indicators	Power ON, System Ready, Wireless Activity, Ethernet Activity	•
Ambient Operating Conditions	0-50°C, 20/90% non-condensing humidity	•
Enclosure	IP52 mounted in upright vertical position	•
System Weight	1.4 kg	•
Overall Dimensions	291 mm x 103 mm x 210 mm	•



Process Communication Module
IC-PCM-2-EU



System Accessories

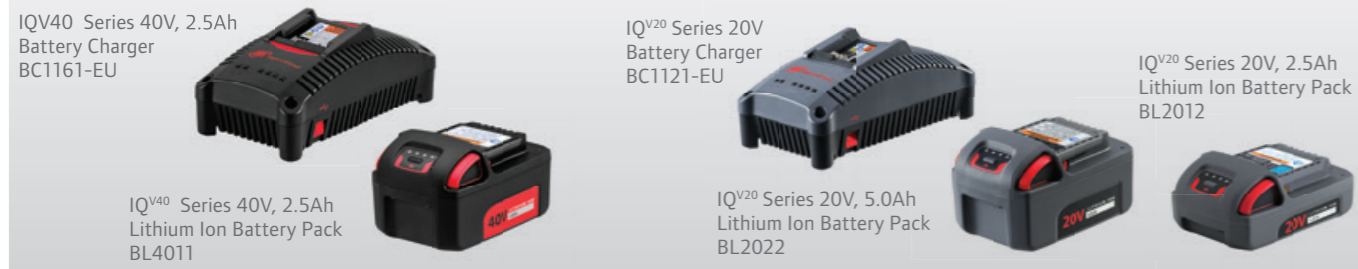
We offer a wide range of accessories that offer ease of use and flexibility to meet your specific application needs. QX Precision Fastening Systems are compatible with a variety of plug and play accessories to maximize productivity for your manufacturing line.

Accessories for Any Application

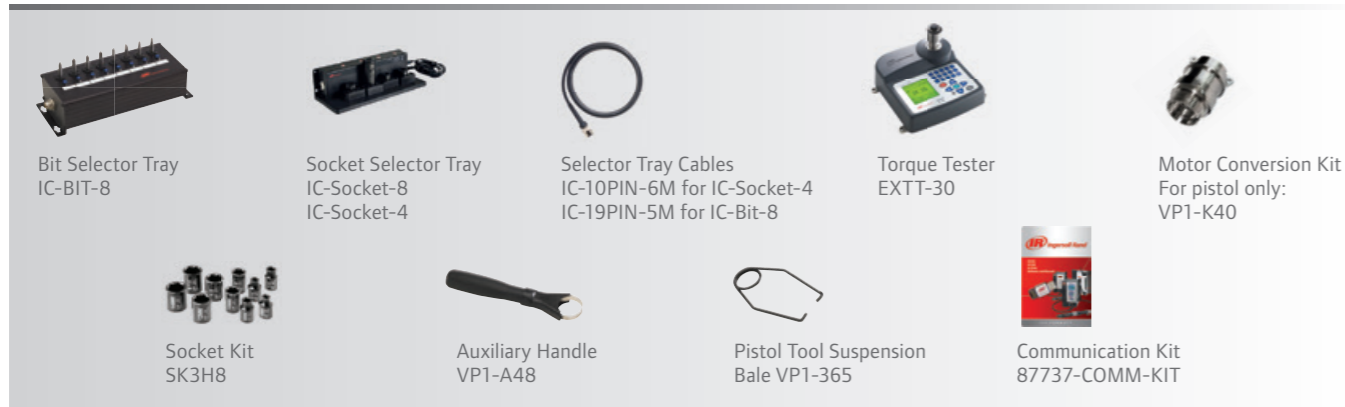
- Battery chargers
- Battery packs
- Boots
- Bit selector trays
- Socket selector trays
- Suspension bales
- Auxiliary handles
- Selector tray cables
- Torque testers
- Spring balancers
- Socket kits

Batteries

All QX Series™ IQV20 tools are compatible with both the BL2022 and BL2012 batteries. The BL2022 is optimum for longer use applications while the BL2012 is ideal for tighter spaces and reduced weight. The QX Series™ IQV40 high torque tools utilize the BL4011 40V battery for increased torque and runtime.



Accessories



QX Pistol Protective Boots

Boot Color	Open Back	Closed Back
Red	VP1-BOOT	VP1-BOOT-NP
Orange	VP1-OR-BOOT	VP1-OR-BOOT-NP
Yellow	VP1-YL-BOOT	VP1-YL-BOOT-NP
Green	VP1-GN-BOOT	VP1-GN-BOOT-NP
Blue	VP1-BL-BOOT	VP1-BL-BOOT-NP
Black	VP1-BK-BOOT	VP1-BK-BOOT-NP
White	VP1-WT-BOOT	VP1-WT-BOOT-NP



Angle head sleeve

Model	CCN	Tool Compatibility
Model extended boot		
VA1-R18-170	47526045001	05P
VA1-R25-170	47526046001	10P, 15P
GAA2-170	80199557	18P, 20P
GAA4-170	80199052	27P, 30P, 35P
GAA5-170	80199656	40P, 80P
Model Angle head sleeve		
GAA40-170	80095847	18P, 20P
GAA40-171	80095888	27P, 30P, 35P
GAA40-172	80095409	40P, 80P

Specification QX Series™



QXN Cordless Tools

QX Series™ Cordless Precision Screwdriver								
QXN2PT04PQ4	0.8-4	1,500	0.91	215.4	20.3-26.0	20V	1/4"	Via USB Cable
QXN2PT04PS4	0.8-4	1,500	0.91	208.3	20.3-26.0	20V	1/4"	Via USB Cable
QXN2PT04PS6	0.8-4	1,500	0.91	212.0	20.3-26.0	20V	3/8"	Via USB Cable
QXN2PT08PQ4	1.6-8	1,150	0.91	215.4	20.3-26.0	20V	1/4"	Via USB Cable
QXN2PT08PS4	1.6-8	1,150	0.91	208.3	20.3-26.0	20V	1/4"	Via USB Cable
QXN2PT08PS6	1.6-8	1,150	0.91	212.0	20.3-26.0	20V	3/8"	Via USB Cable
QXN2PT12PQ4	2.4-12	750	0.91	215.4	20.3-26.0	20V	1/4"	Via USB Cable
QXN2PT12PS4	2.4-12	750	0.91	208.3	20.3-26.0	20V	1/4"	Via USB Cable
QXN2PT12PS6	2.4-12	750	0.91	212.0	20.3-26.0	20V	3/8"	Via USB Cable
QXN2PT18PQ4	3.6-18	500	0.91	215.4	20.3-26.0	20V	1/4"	Via USB Cable
QXN2PT18PS6	3.6-18	500	0.91	212.0	20.3-26.0	20V	3/8"	Via USB Cable

QX Series™ Angle Wrench								
QXN2AT05PQ4	1.0-5	1213	1.14	552	9.2	20V	1/4"	Via USB Cable
QXN2AT10PS6	2.0-10	936	1.18	525	12.5	20V	3/8"	Via USB Cable
QXN2AT15PS6	3.0-15	600	1.18	525	12.5	20V	3/8"	Via USB Cable
QXN2AT18PQ4	3.6-18	500	1.27	542	13	20V	1/4"	Via USB Cable
QXN2AT18PS6	3.6-18	500	1.27	542	13	20V	3/8"	Via USB Cable
QXN2AT27PS6	5.4-27	330	1.68	552	17	20V	3/8"	Via USB Cable

QX Series™ High Torque Angle Wrench								
QXN5AT20PS06	4.0-20	1045	2.04	577.7	13.1	40V	3/8"	Via USB Cable
QXN5AT30PS06	6.0-30	775	2.18	581.8	17.2	40V	3/8"	Via USB Cable
QXN5AT30PS08	6.0-30	775	2.18	581.8	17.2	40V	1/2"	Via USB Cable
QXN5AT35PS06	7.0-35	640	2.18	581.8	17.2	40V	3/8"	Via USB Cable
QXN5AT35PS08	7.0-35	640	2.18	581.8	17.2	40V	1/2"	Via USB Cable
QXN5AT40PS08	8.0-40	545	2.27	586.1	21.6	40V	1/2"	Via USB Cable
QXN5AT80PS08	12.0-80	375	2.27	586.1	21.6	40V	1/2"	Via USB Cable

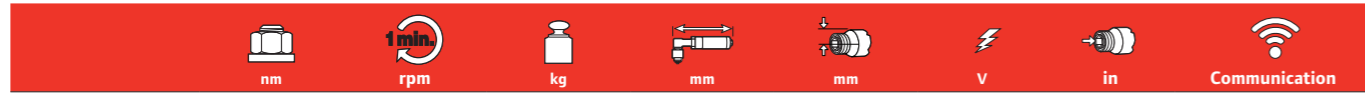
QXC Cordless Tools

QX Series™ Cordless Precision Screwdriver								
QXC2PT04PQ4	0.8-4	1,500	0.91	215.4	20.3-26.0	20V	1/4"	Via USB Cable
QXC2PT04PS4	0.8-4	1,500	0.91	208.3	20.3-26.0	20V	1/4"	Via USB Cable
QXC2PT04PS6	0.8-4	1,500	0.91	212.0	20.3-26.0	20V	3/8"	Via USB Cable
QXC2PT08PQ4	1.6-8	1,150	0.91	215.4	20.3-26.0	20V	1/4"	Via USB Cable
QXC2PT08PS4	1.6-8	1,150	0.91	208.3	20.3-26.0	20V	1/4"	Via USB Cable
QXC2PT08PS6	1.6-8	1,150	0.91	212.0	20.3-26.0	20V	3/8"	Via USB Cable
QXC2PT12PQ4	2.4-12	750	0.91	215.4	20.3-26.0	20V	1/4"	Via USB Cable
QXC2PT12PS4	2.4-12	750	0.91	208.3	20.3-26.0	20V	1/4"	Via USB Cable
QXC2PT12PS6	2.4-12	750	0.91	212.0	20.3-26.0	20V	3/8"	Via USB Cable
QXC2PT18PQ4	3.6-18	500	0.91	215.4	20.3-26.0	20V	1/4"	Via USB Cable
QXC2PT18PS6	3.6-18	500	0.91	212.0	20.3-26.0	20V	3/8"	Via USB Cable

QX Series™ Angle Wrench								
QXC2AT05PQ4	1.0-5	1213	1.14	552	9.2	20V	1/4"	Via USB Cable
QXC2AT10PS6	2.0-10	936	1.18	525	12.5	20V	3/8"	Via USB Cable
QXC2AT15PS6	3.0-15	600	1.18	525	12.5	20V	3/8"	Via USB Cable
QXC2AT18PQ4	3.6-18	500	1.27	542	13	20V	1/4"	Via USB Cable
QXC2AT18PS6	3.6-18	500	1.27	542	13	20V	3/8"	Via USB Cable
QXC2AT27PS6	5.4-27	330	1.68	552	17	20V	3/8"	Via USB Cable

QX Series™ High Torque Angle Wrench								
QXC5AT20PS06	4.0-20	1045	2.04	577.7	13.1	40V	3/8"	Via USB Cable
QXC5AT30PS06	6.0-30	775	2.18	581.8	17.2	40V	3/8"	Via USB Cable
QXC5AT30PS08	6.0-30	775	2.18	581.8	17.2	40V	1/2"	Via USB Cable
QXC5AT35PS06	7.0-35	640	2.18	581.8	17.2	40V	3/8"	Via USB Cable
QXC5AT35PS08	7.0-35	640	2.18	581.8	17.2	40V	1/2"	Via USB Cable
QXC5AT40PS08	8.0-40	545	2.27	586.1	21.6	40V	1/2"	Via USB Cable
QXC5AT80PS08	12.0-80	375	2.27	586.1	21.6	40V	1/2"	Via USB Cable

Specification QX Series™



QXX Cordless Tools

QX Series™ Cordless Precision Screwdriver								
QXX2PT04PQ4	0.8-4	1,500	0.91	215.4	20.3-26.0	20V	1/4"	Wireless enabled + USB
QXX2PT04PS4	0.8-4	1,500	0.91	208.3	20.3-26.0	20V	1/4"	Wireless enabled + USB
QXX2PT04PS6	0.8-4	1,500	0.91	212.0	20.3-26.0	20V	3/8"	Wireless enabled + USB
QXX2PT08PQ4	1.6-8	1,150	0.91	215.4	20.3-26.0	20V	1/4"	Wireless enabled + USB
QXX2PT048S4	1.6-8	1,150	0.91	208.3	20.3-26.0	20V	1/4"	Wireless enabled + USB
QXX2PT08PS6	1.6-8	1,150	0.91	212.0	20.3-26.0	20V	3/8"	Wireless enabled + USB
QXX2PT12PQ4	2.4-12	750	0.91	215.4	20.3-26.0	20V	1/4"	Wireless enabled + USB
QXX2PT12PS4	2.4-12	750	0.91	208.3	20.3-26.0	20V	1/4"	Wireless enabled + USB
QXX2PT12PS6	2.4-12	750	0.91	212.0	20.3-26.0	20V	3/8"	Wireless enabled + USB
QXX2PT18PQ4	3.6-18	500	0.91	215.4	20.3-26.0	20V	1/4"	Wireless enabled + USB
QXX2PT18PS6	3.6-18	500	0.91	212.0	20.3-26.0	20V	3/8"	Wireless enabled + USB

QX Series™ Angle Wrench								
QXX2AT05PQ4	1.0-5	1213	1.14	552	9.2	20V	1/4"	Wireless enabled + USB
QXX2AT10PS6	2.0-10	936	1.18	525	12.5	20V	3/8"	Wireless enabled + USB
QXX2AT15PS6	3.0-15	600	1.18	525	12.5	20V	3/8"	Wireless enabled + USB
QXX2AT18PQ4	3.6-18	500	1.27	542	13	20V	1/4"	Wireless enabled + USB
QXX2AT18PS6	3.6-18	500	1.27	542	13	20V	3/8"	Wireless enabled + USB
QXX2AT27PS6	5.4-27	330	1.68	552	17	20V	3/8"	Wireless enabled + USB

QX Series™ High Torque Angle Wrench								
QXX5AT20PS06	4.0-20	1045	2.04	577.7	13.1	40V	3/8"	Wireless enabled + USB
QXX5AT30PS06	6.0-30	775	2.18	581.8	17.2	40V	3/8"	Wireless enabled + USB
QXX5AT30PS08	6.0-30	775	2.18	581.8	17.2	40V	1/2"	Wireless enabled + USB
QXX5AT35PS06	7.0-35	640	2.18	581.8	17.2	40V	3/8"	Wireless enabled + USB
QXX5AT35PS08	7.0-35	640	2.18	581.8	17.2	40V	1/2"	Wireless enabled + USB
QXX5AT40PS08	8.0-40	545	2.27	586.1	21.6	40V	1/2"	Wireless enabled + USB
QXX5AT80PS08	12.0-80	375	2.27	586.1	21.6	40V	1/2"	Wireless enabled + USB

QXM Cordless Torque Multiplier

QX Series™ Pistol								
QXC2PT200NPS12	40-200	45	3.62	373	56	20V	3/4"	Via USB Cable
QXC2PT500NPS12	100-500	18	3.62	373	56	20V	3/4"	Via USB Cable
QXC2PT1000NPS12	200-1,000	9	5.44	419	80	20V	3/4"	Via USB Cable
QXC2PT1350NPS16	270-1,350	7	5.44	419	80	20V	1"	Via USB Cable
QXC2PT2000NPS16	400-2,000	5	6.80	452	80	20V	1"	Via USB Cable
QXX2PT200NPS12	40-200	45	3.62	373	56	20V	3/4"	Wireless enabled + USB
QXX2PT500NPS12	100-500	18	3.62	373	56	20V	3/4"	Wireless enabled + USB
QXX2PT1000NPS12	200-1,000	9	5.44	419	80	20V	3/4"	Wireless enabled + USB
QXX2PT1350NPS16	270-1,350	7	5.44	419	80	20V	1"	Wireless enabled + USB
QXX2PT2000NPS16	400-2,000	5	6.80	452	80	20V	1"	Wireless enabled + USB

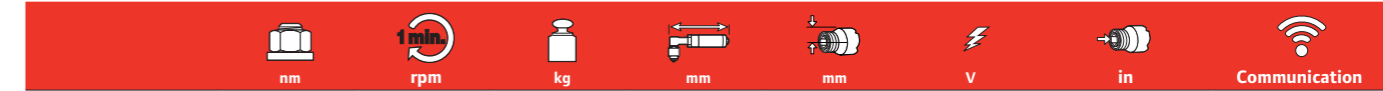
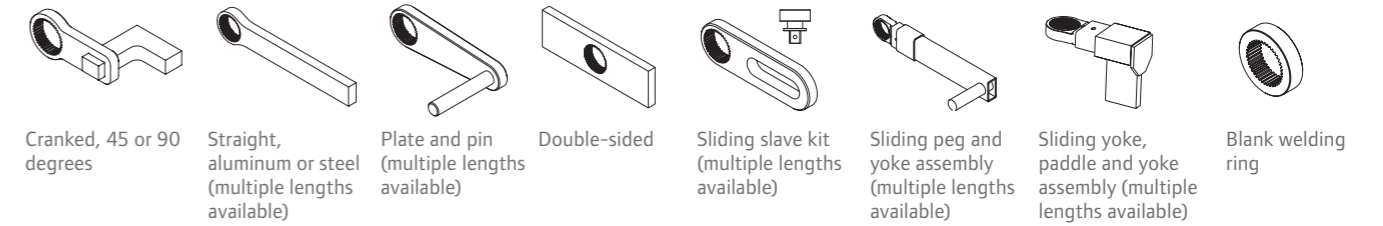
QX Series™ Pistol Kit*								
QXC2P200S12K2	40-200	45	3.62	373	56	20V	3/4"	Via USB Cable
QXC2P500S12K2	100-500	18	3.62	373	56	20V	3/4"	Via USB Cable
QXC2P1000S12K2	200-1,000	9	5.44	419	80	20V	3/4"	Via USB Cable
QXC2P1350S16K2	270-1,350	7	5.44	419	80	20V	1"	Via USB Cable
QXC2P2000S16K2	400-2,000	5	6.80	452	80	20V	1"	Via USB Cable
QXX2P200PS12K2	40-200	45	3.62	373	56	20V	3/4"	Wireless enabled + USB
QXX2P500PS12K2	100-500	18	3.62	373	56	20V	3/4"	Wireless enabled + USB
QXX2P1000PS12K2	200-1,000	9	5.44	419	80	20V	3/4"	Wireless enabled + USB
QXX2P1350PS16K2	270-1,350	7	5.44	419	80	20V	1"	Wireless enabled + USB
QXX2P2000PS16K2	400-2,000	5	6.80	452	80	20V	1"	Wireless enabled + USB

QX Series™ Angle Wrench†								
QXX5A45T0180PS12	16-180	110	4.25	560	150	40V	3/4"	Wireless enabled + USB
QXX5A45T0270PS12	54-270	77	4.25	560	150	40V	3/4"	Wireless enabled + USB
QXX2A52T0396PS12	79-395	21	3.54	535	175	20V	3/4"	Wireless enabled + USB
QXX2A52T0594PS12	119-594	14	4.06	535	175	20V	3/4"	Wireless enabled + USB
QXX5A52T0880PS12	180-880	23	4.60	560	175	40V	3/4"	Wireless enabled + USB
QXX5A72T1080PS16	216-1,080	19	5.97	575	195	40V	1"	Wireless enabled + USB
QXX5A72T1620PS16	324-1,620	13	5.97	575	195	40V	1"	Wireless enabled + USB

Specification QX Series™

QX Multiplier Reaction Arms

Ingersoll Rand offers the following variety of reaction arms for different applications. Reaction arms are available in both 52 mm and 72 mm spline drives, depending on the size of the gearbox.



QX ETS Cordless Tools (Ergonomic Tightening System)

QXN Cordless Precision Screwdriver								
QXN2PT08ES6	1.6-8	1150	0.91	203	26	20V Li-ion	3/8" Square	Via USB Cable
QXN2PT08EQ4	1.6-8	1150	0.91	206.5	26	20V Li-ion	1/4" Quick Change	Via USB Cable
QXN2PT12ES6	2.4-12	750	0.91	203	26	20V Li-ion	3/8" Square	Via USB Cable
QXN2PT12EQ4	2.4-12	750	0.91	206.5	26	20V Li-ion	1/4" Quick Change	Via USB Cable
QXN2PT18ES6	3.6-18	500	0.91	203	26	20V Li-ion	3/8" Square	Via USB Cable
QXN2PT18EQ4	3.6-18	500	0.91	206.5	26	20V Li-ion	1/4" Quick Change	Via USB Cable

QXN Cordless Angle Wrench								
QXN2AT27ES6	5.4-27	330	1.68	552	17. Feb	20V Li-ion	3/8" Square	Via USB Cable

QXN Cordless High Torque Angle Wrench								
QXN5AT40ES08	8.0-40	545	2.27	586.1	21.6	40V Li-ion	1/2" Square	Via USB Cable
QXN5AT80ES08	12.0-80	375	2.27	586.1	21.6	40V Li-ion	1/2" Square	Via USB Cable

QXC Cordless Precision Screwdriver								
QXC2PT18ES6	3.6-18	500	0.91	203	26	20V Li-ion	3/8" Square	Via USB Cable
QXC2PT18EQ4	3.6-18	500	0.91	206.5	26	20V Li-ion	1/4" Quick Change	Via USB Cable
QXC2PT08ES6	1.6-8	1150	0.91	203	26	20V Li-ion	3/8" Square	Via USB Cable
QXC2PT08EQ4	1.6-8	1150	0.91	206.5	26	20V Li-ion	1/4" Quick Change	Via USB Cable
QXC2PT12ES6	2.4-12	750	0.91	203	26	20V Li-ion	3/8" Square	Via USB Cable
QXC2PT12EQ4	2.4-12	750	0.91	206.5	26	20V Li-ion	1/4" Quick Change	Via USB Cable

QXC Cordless Angle Wrench								
QXC2AT27ES6	5.4-27	330	1.68	552	17. Feb	20V Li-ion	3/8" Square	Via USB Cable

QXC Cordless High Torque Angle Wrench								
QXC5AT40ES08	8.0-40	545	2.27	586.1	21.6	40V Li-ion	1/2" Square	Via USB Cable
QXC5AT80ES08	12.0-80	375	2.27	586.1	21.6	40V Li-ion	1/2" Square	Via USB Cable

QXX Cordless Precision Screwdriver								
QXX2PT08ES6	1.6-8	1150	0.91	203	26	20V Li-ion	3/8" Square	Wireless Enabled + USB
QXX2PT08EQ4	1.6-8	1150	0.91	206.5	26	20V Li-ion	1/4" Quick Change	Wireless Enabled + USB
QXX2PT12ES6	2.4-12	750	0.91	203	26	20V Li-ion	3/8" Square	Wireless Enabled + USB
QXX2PT12EQ4	2.4-12	750	0.91	206.5	26	20V Li-ion	1/4" Quick Change	Wireless Enabled + USB
QXX2PT18ES6	3.6-18	500	0.91	203	26	20V Li-ion	3/8" Square	Wireless Enabled + USB
QXX2PT18EQ4	3.6-18	500	0.91	206.5	26	20V Li-ion	1/4" Quick Change	Wireless Enabled + USB

QXX Cordless Angle Wrench								
QXX2AT27ES6	5.4-27	330	1.68	552	17. Feb	20V Li-ion	3/8" Square	Wireless Enabled + USB

QXX Cordless High Torque Angle Wrench								
QXX5AT40ES08	8.0-40	545	2.27	586.1	21.6	40V Li-ion	1/2" Square	Wireless Enabled + USB
QXX5AT80ES08	12.0-80	375	2.27	586.1	21.6	40V Li-ion	1/2" Square	Wireless Enabled + USB



Ingersoll Rand (NYSE:IR) advances the quality of life by creating comfortable, sustainable and efficient environments. Our people and our family of brands—including Club Car®, Ingersoll Rand®, Thermo King® and Trane®—work together to enhance the quality and comfort of air in homes and buildings; transport and protect food and perishables; and increase industrial productivity and efficiency. We are a \$14 billion global business committed to a world of sustainable progress and enduring results.



www.ingersollrandproducts.com

Distributed by:

Ingersoll Rand, IR and the IR logo are trademarks of Ingersoll Rand, its subsidiaries and/or affiliates. All other trademarks are the property of their respective owners. Nothing contained on these pages is intended to extend any warranty or representation, expressed or implied, regarding the product described herein. Any such warranties or other terms and conditions of sale of products shall be in accordance with Ingersoll Rand's standard terms and conditions of sale for such products, which are available upon request.

Product improvement is a continuing goal at Ingersoll Rand. Designs and specifications are subject to change without notice or obligation.